

56K Analog Modem User's Manual

Copyright

Copyright © 2002 by this company. All rights reserved. No part of this publication may be reproduced, transmitted, transcribed, stored in a retrieval system, or translated into any language or computer language, in any form or by any means, electronic, mechanical, magnetic, optical, chemical, manual or otherwise, without the prior written permission of this company.

Disclaimer

This company makes no representations or warranties, either expressed or implied, with respect to the contents hereof and specifically disclaims any warranties, merchantability or fitness for any particular purpose. Any software described in this manual is sold or licensed "as is". Should the programs prove defective following their purchase, the buyer (and not this company, its distributor, or its dealer) assumes the entire cost of all necessary servicing, repair, and any incidental or consequential damages resulting from any defect in the software. Further, this company reserves the right to revise this publication and to make changes from time to time in the contents hereof without obligation to notify any person of such revision or changes.

All brand and product names mentioned in this manual are trademarks and/or registered trademarks of their respective holders.

Contents

1 Introduction.....	3
1.1 System Requirements.....	3
1.2 Package Contents.....	3
2 Hardware Installation Instructions	4
2.1 PCI Interfaced Analog Modem Card	4
2.2 RS232 Analog Modem	4
2.3 Pocket Sized USB/RS232 Analog Modem.....	4
3 Software Driver Installation	4
3.1 Modem Software Driver Installation Procedures.....	4
3.1.1 For Windows ME, 2000 and XP	5
3.1.2 For Windows 98SE	7
3.1.3 For Windows NT4.0	10
3.1.4 Additional Agere Modem Notes	10
3.2 Contact Information.....	11

1. Introduction

Fax Modem Installation CD is an All-In-One installation utility for both internal and external Fax, Voice/Fax and Voice/Fax with Speaker Phone Analog Modems. It automatically detects and installs recently installed modem hardware under Windows 98SE, ME, 2000 and XP. This utility includes Install Driver, Install Software Utilities, User Manual and Readme four sections. Click Install Driver to start analog modem device driver installation process. Install Software Utilities includes “FaxTalk Communicator SE” (all modem software driver installation program), FaxTalk NetOnHold (modem software driver installation program for modems with Hold-on-Call feature), Adobe Reader 6.0 and Panda Antivirus Platinum 9.0. User Manual includes this user’s manual and specs for all modems this utility supports. Readme includes modem software driver locations and modem hardware installation instructions.

1.1 System Requirements

- Pentium 100 Mhz CPU or faster
- 32 MB system memory or more
- 10 MB free space on your hard drive
- 256-color VGA or higher resolution
- CD-ROM drive
- One available PCI slot for internal modem; one available USB connector or RS232 connector for external modems
- Microsoft Windows 98SE, ME, XP, or 2000 operating system disk

1.2 Package Contents

- One internal/external Analog Modem
- One RJ-11 Cable
- One USB Cable for USB model; One RS232 Cable for RS232 model
- 9V AC adapter for RS232 Analog Modem
- Fax Modem Installation CD CD-ROM disk
- Quick Installation Guide

If any of above items is missing or damaged, please contact your local dealer immediately.

2. Hardware Installation Instructions

2.1 PCI Interfaced Analog Modem Card

- 1) Open PC case and insert PCI Card into an available PCI slot.
- 2) Close PC case, then plug one end of RJ-11 cables into modem's LINE jack and the other end into telephone wall jack.

2.2 RS232 Analog Modem

- 1) Connect modem and PC with RS232 cable.
- 2) Plug one end of RJ-11 cable into modem's LINE jack and the other end into telephone wall jack.
- 3) Plug in AC power adapter.

2.3 Pocket sized RS232 and USB Analog Modem

- 1) Connect modem and PC with RS232/USB cable.
- 2) Plug one end of RJ-11 cable into modem's LINE jack and the other end into telephone wall jack.

3. Software Driver Installation

3.1 Modem Software Driver Installation Procedures

Insert FAX Modem Installation CD into CD-ROM drive then window below will appear.



Install Driver: Click Install Driver to start analog modem installation process.

Install Software Utilities: Install Software Utilities includes “FaxTalk Communicator SE” (all modem software driver installation program), FaxTalk NetOnHold (modem software driver installation program for modems with Hold-on-Call feature), Adobe Reader 6.0 and Panda Antivirus Platinum 9.0.

User Manual: User Manual includes this user’s manual and specs for all modems this utility supports.

Readme: Readme includes modem software driver locations and modem hardware installation instructions.

3.1.1 For Windows ME, 2000 and XP

1)Once click **Install Driver** to start the analog modem installation, window below will appear.



2)After Fax Modem Installation Utility finishes installing corresponding analog modem device driver, window below will appear. Click **OK** to complete the installation process.



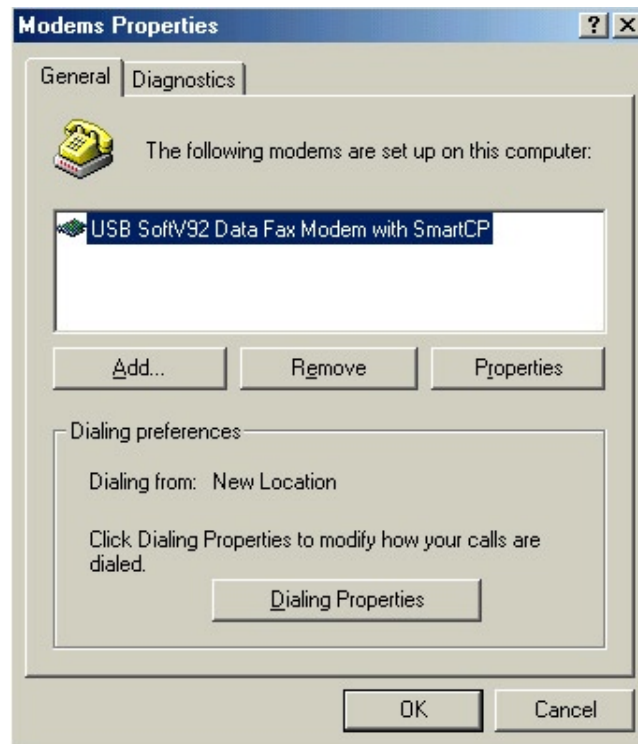
3) Click **Exit** to close FAX Modem Installation Utility.



4) To check if modem is properly installed:

For Windows ME

Click "**Start**→**Settings**→**Control Panel**→**Modems**".



3.1.2 For Windows 98SE

1) Once click **Install Driver** to start the analog modem installation, window below will appear:



2) After Fax Modem Installation Utility finishes copying analog modem device driver, window below will appear then click **OK** to reboot your system.



3) After system boots up, operating system will detect the recently installed analog modem, window below will appear then click **Next** to continue.



4) Click **Next** to continue,



5) Select **Specify a location** (utility automatically gives driver location, so you don't have to enter the driver location path) then click **Next** to continue,



6) Click **Next** to continue,

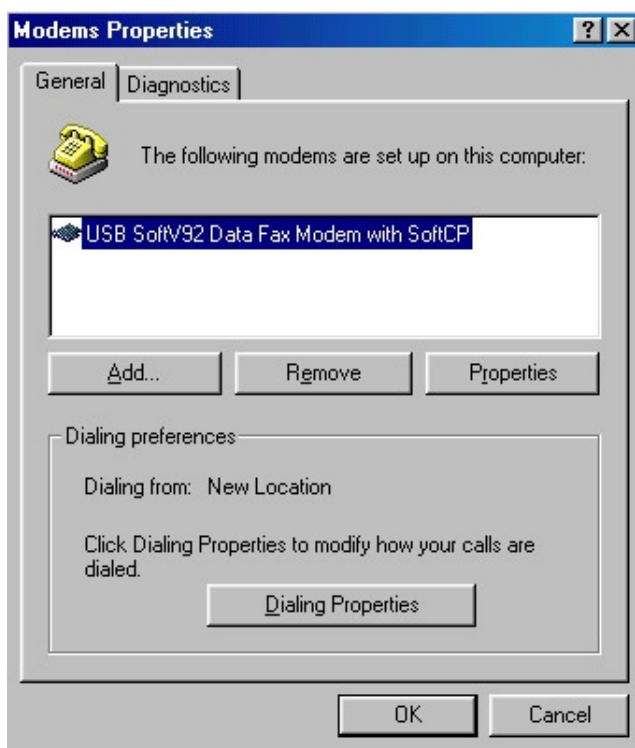


7) After operating system finishes installing the analog modem driver, click **Finish** to complete the device driver installation,



8) To check if modem is properly installed:

Click “**Start → Settings → Control Panel → Modems**”.



3.1.3 For Windows NT4.0

Windows NT4.0 Installation process:

1) This Fax Modem Installation CD does NOT support Windows NT4.0 autorun. Once you install modem in Windows NT4.0 system, open the CD-ROM contents, and direct to Modem’s NT4.0 driver.

2) Open the folder ‘NT40’ and then double-click on its install program.

Note: For locating modem’s install program, please refer to the below list of Modem chipset and its NT40 directory.

Agere HPI56L: \\Driver\Agere(Lucent) \Internal\PCI2\NT40\setup.exe

Conexant VPI56SP: \\Driver\Conexant\Internal\Controlless\NT40\SETUP.EXE

Intel VPI56SPA: \\Driver\Intel(Ambient)\Internal\Controlless\NT40\installer.exe

3) Follow the instructions on the screen to install modem.

4) When finish the installation, we recommend you to restart your computer for system’s setting before you use the modem. Then, the Modem setup is now finished.

3.1.4 Additional Agere Modem Notes

If you want to enable Agere’s Modem-on-Hold (MoH) function, please go to the below directory and execute its program:

For External Modem (VD56L): \\Driver\Agere(Lucent)\External\MOH\LtMoh.exe

For Internal Modem (HPI56L5): \\Driver\Agere(Lucent)\Internal\PCI5\MOH\LtMoh.exe

3.2 If you have trouble to install modem on your system, please contact us.

Before contacting us, make sure collect following information. With complete information of your problem, we will provide you accurate answers.

Model Name:

Serial Number:

PC Settings:

Other: